



**LEGEND**

Electricity Act 1989 and Acquisition of Land Act 1981  
Confirmed on behalf of the Secretary of State for Business,  
Energy and Industrial Strategy.

*PP McHaven 21/10/21*  
Gareth Leigh - Head of Energy Infrastructure Planning



Department for  
Business, Energy  
& Industrial Strategy



NEET 16047

The common seal of National  
Grid Electricity Transmission plc  
was affixed on the 15 day  
of June 2020  
in the presence of  
*[Signature]*  
(Member of the Board Sealing  
Committee and Authorised  
Signatory)

Dated 15/06/20

BACKGROUND MAPPING INFORMATION HAS BEEN REPRODUCED  
FROM THE ORDINANCE SURVEY ON BEHALF OF THE CONTROLLER  
OF HER MAJESTY'S STATIONARY OFFICE  
© CROWN COPYRIGHT ORDNANCE SURVEY NATIONAL GRID  
LICENSE NO. 100022488

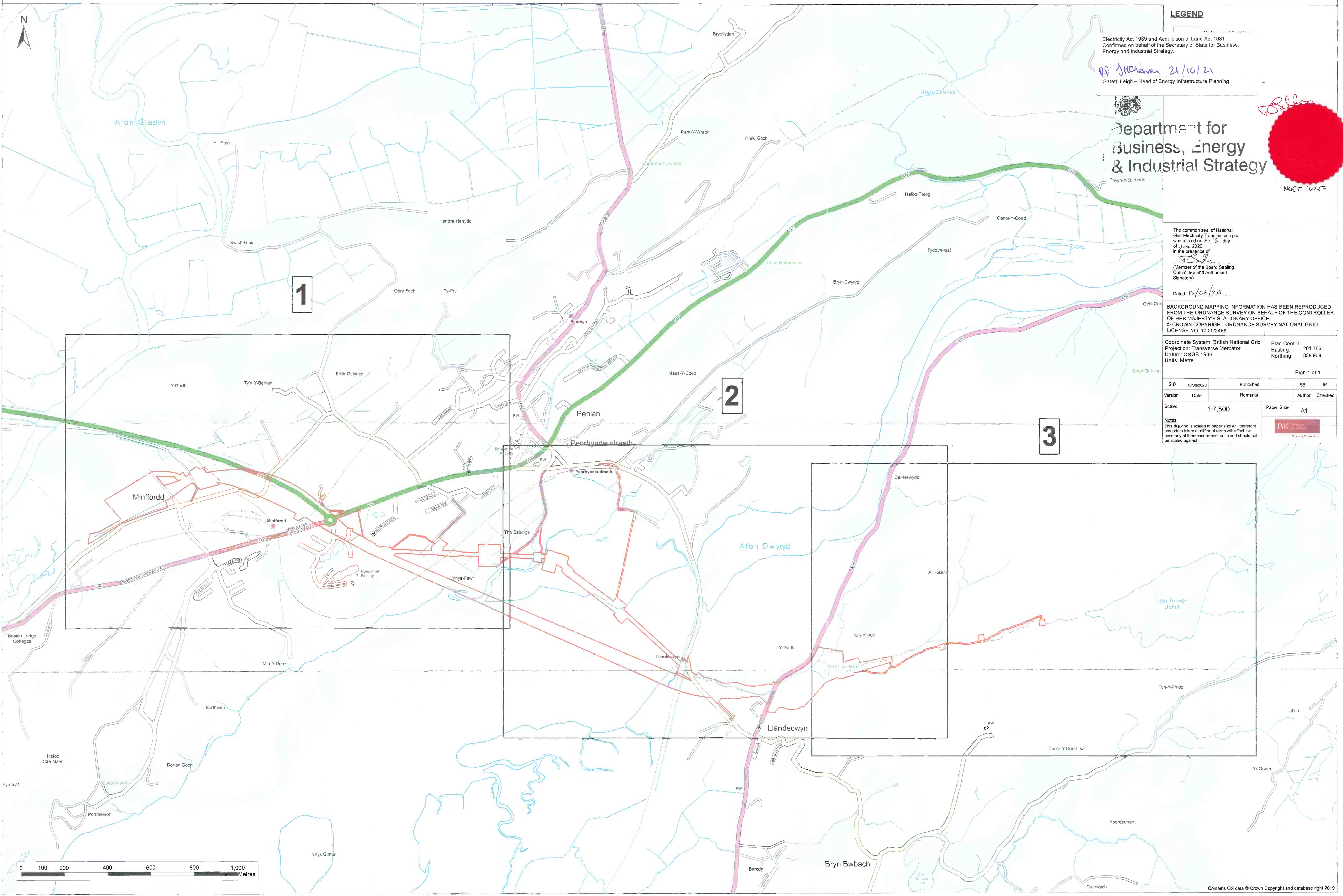
Coordinate System: British National Grid  
Projection: Transverse Mercator  
Datum: OSGB 1936  
Units: Metre

Plan Center  
Eastings: 261,766  
Northings: 338,908

Plan 1 of 1

2.0	10062020	Published	SB	JP
Version	Date	Remarks	Author	Checked
Scale:	1:7,500	Paper Size:	A1	

**Notes**  
This drawing is scaled at paper size A1; therefore  
any prints taken at different sizes will affect the  
accuracy of the measurement units and should not  
be scaled against.







**LEGEND**

- Order Land Boundary
- New Rights to be Acquired
- Freehold Acquisition

Electricity Act 1989 and Acquisition of Land Act 1981  
Confirmed on behalf of the Secretary of State for Business,  
Energy and Industrial Strategy.

*GD Atchener 21/10/21*  
Garth Leigh - Head of Energy Infrastructure Planning



**Department for  
Business, Energy  
& Industrial Strategy**

The common seal of National  
Grid Electricity Transmission plc  
was affixed on the 15 day  
of June 2020  
in the presence of  
*G. O'Brien*  
(Member of the Board Sealing  
Committee and Authorised  
Signatory)

Dated 15/06/20

BACKGROUND MAPPING INFORMATION HAS BEEN REPRODUCED  
FROM THE ORDNAVANCE SURVEY ON BEHALF OF THE CONTROLLER  
OF HER MAJESTY'S STATIONARY OFFICE.  
© CROWN COPYRIGHT ORDNANCE SURVEY NATIONAL GRID  
LICENSE NO. 100022488

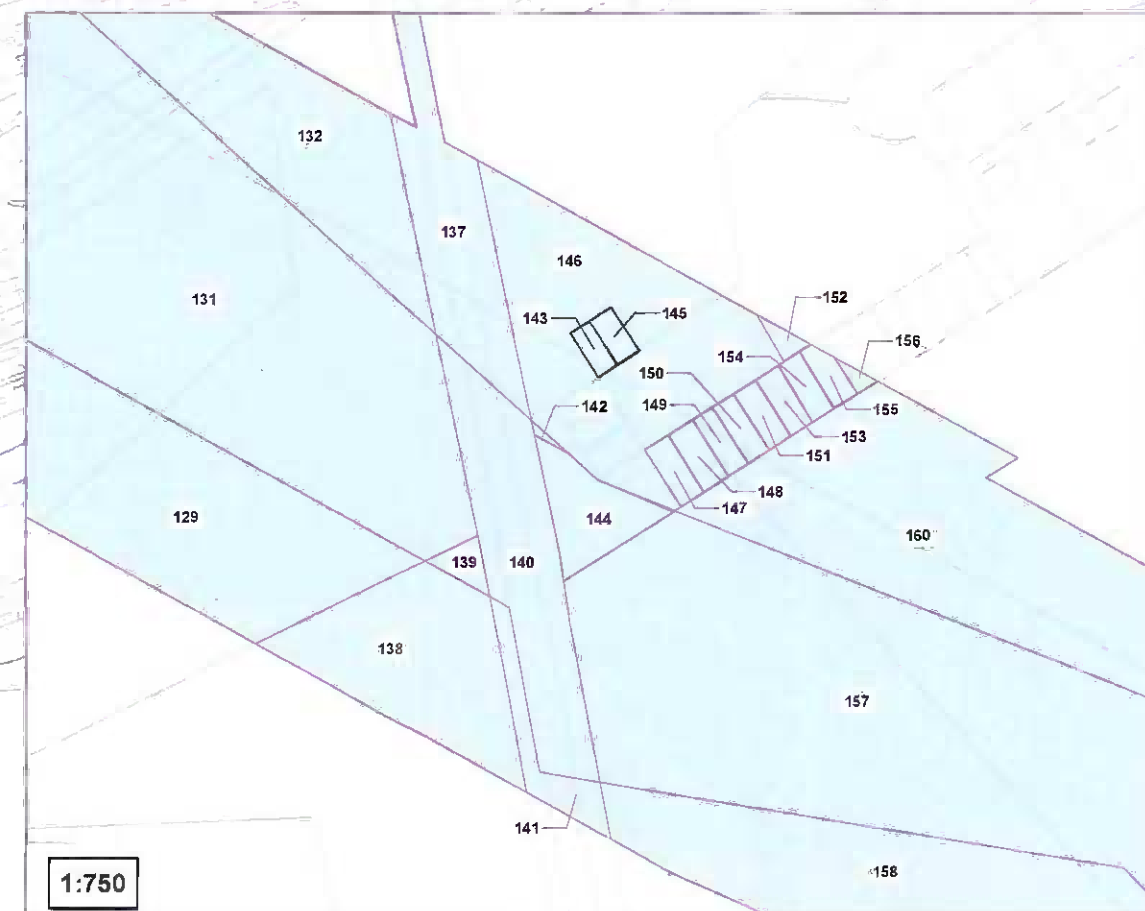
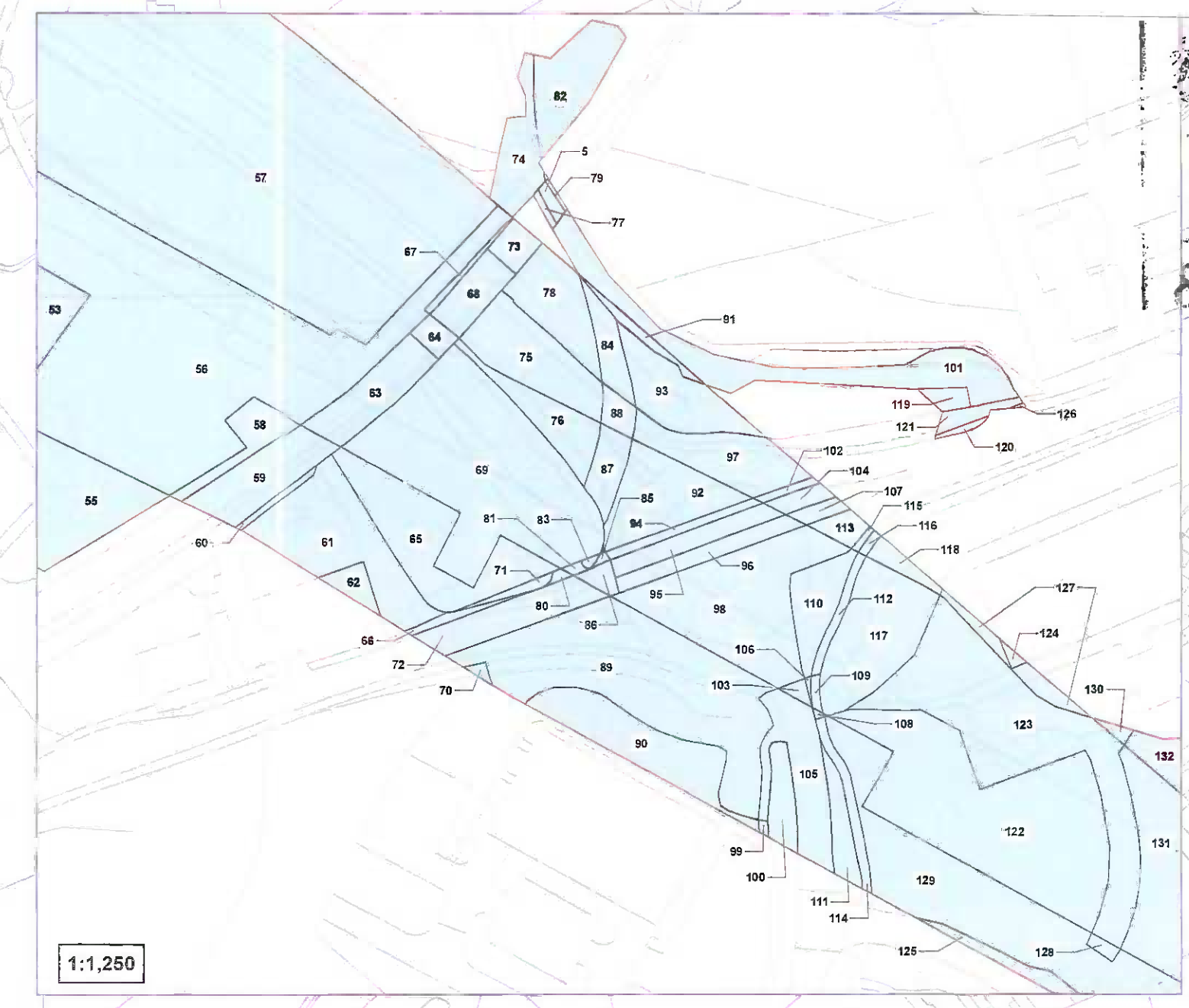
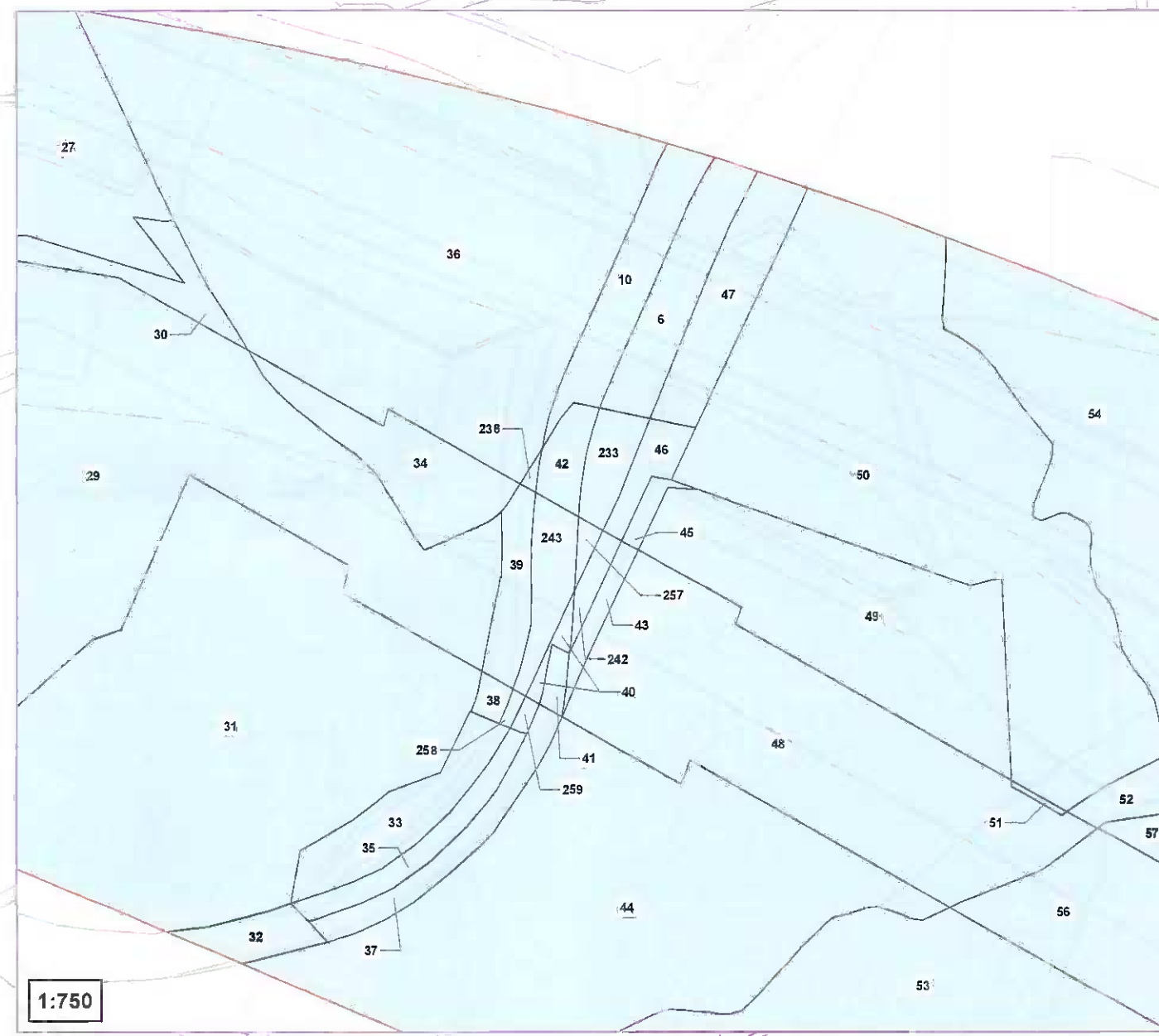
Coordinate System: British National Grid  
Projection: Transverse Mercator  
Datum: OSGB 1936  
Units: Metre  
Plan Center  
Eastings: 260,035  
Northings: 338,783

Plan 1 of 3

2.0	10/06/2020	Published	SB	JP
Version	Date	Remarks	Author	Checked

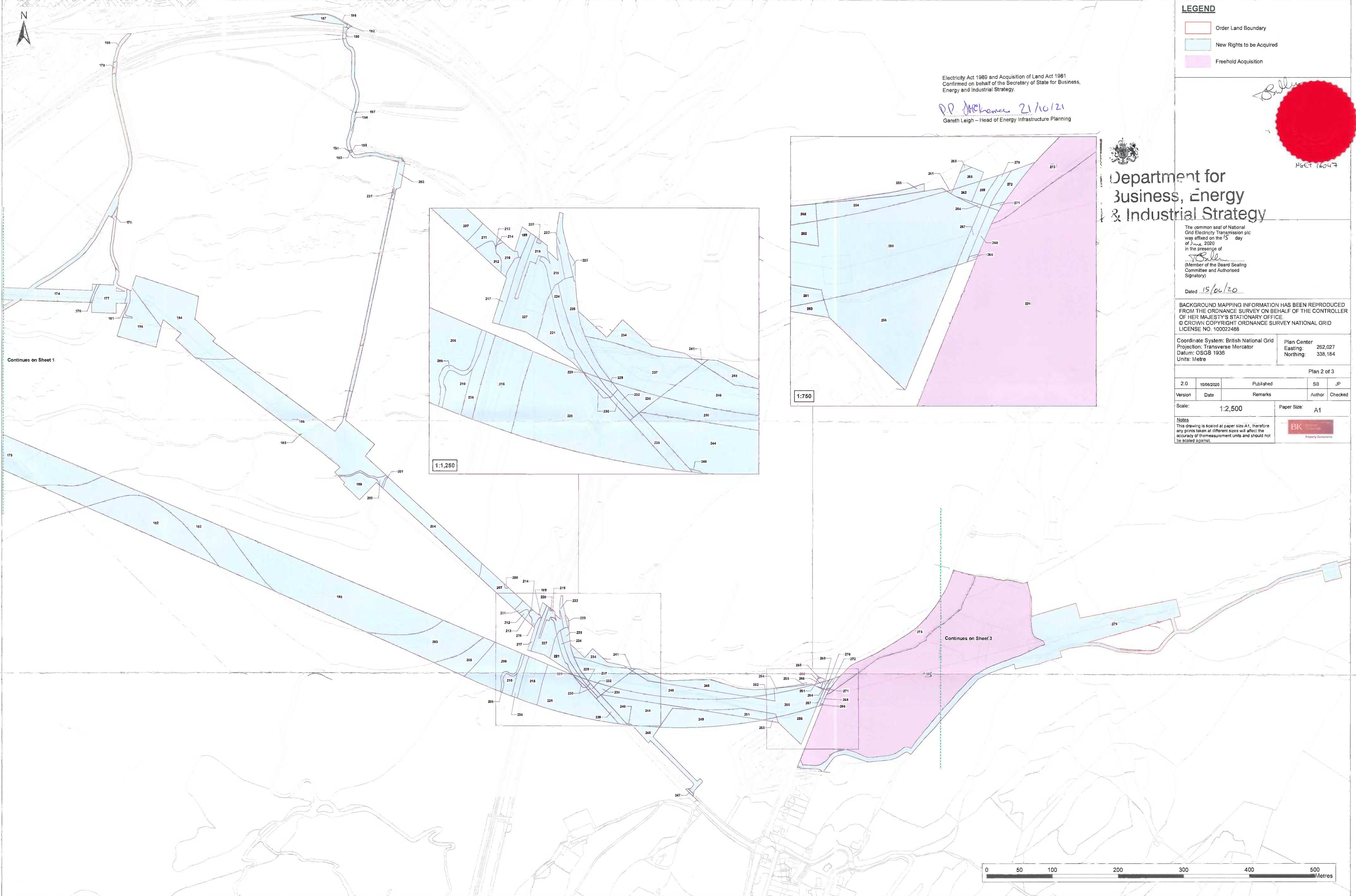
Scale: 1:2,500 Paper Size: A1

**Notes**  
This drawing is scaled at paper size A1, therefore  
any prints taken at different sizes will affect the  
accuracy of the measurement units and should not  
be scaled against.

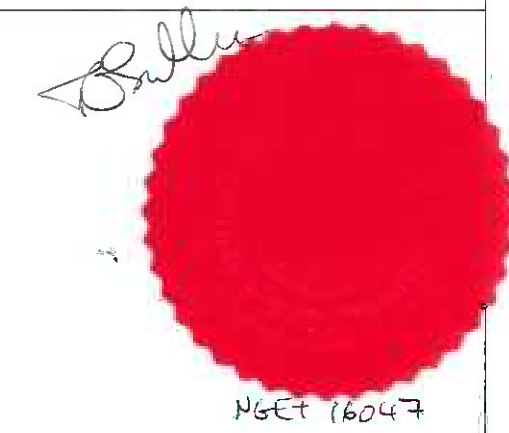


Continues  
on Sheet 2





Electricity Act 1989 and Acquisition of Land Act 1981  
Confirmed on behalf of the Secretary of State for Business,  
Energy and Industrial Strategy.  
*PP McMahon 21/10/21*  
Gareth Leigh - Head of Energy Infrastructure Planning



Department for  
Business, Energy  
& Industrial Strategy

The common seal of National  
Grid Electricity Transmission plc  
was affixed on the 15<sup>th</sup> day  
of June, 2020  
in the presence of  
*G. Ball*  
(Member of the Board Sealing  
Committee and Authorised  
Signatory)

Dated 15/06/20

BACKGROUND MAPPING INFORMATION HAS BEEN REPRODUCED  
FROM THE ORDNANCE SURVEY ON BEHALF OF THE CONTROLLER  
OF HER MAJESTY'S STATIONARY OFFICE.  
© CROWN COPYRIGHT ORDNANCE SURVEY NATIONAL GRID  
LICENSE NO. 100022488

Coordinate System: British National Grid  
Projection: Transverse Mercator  
Datum: OSGB 1936  
Units: Metre  
Plan Center  
Easting: 262,027  
Northing: 338,184

Plan 2 of 3

2.0	10/06/2020	Published	SB	JP
Version	Date	Remarks	Author	Checked

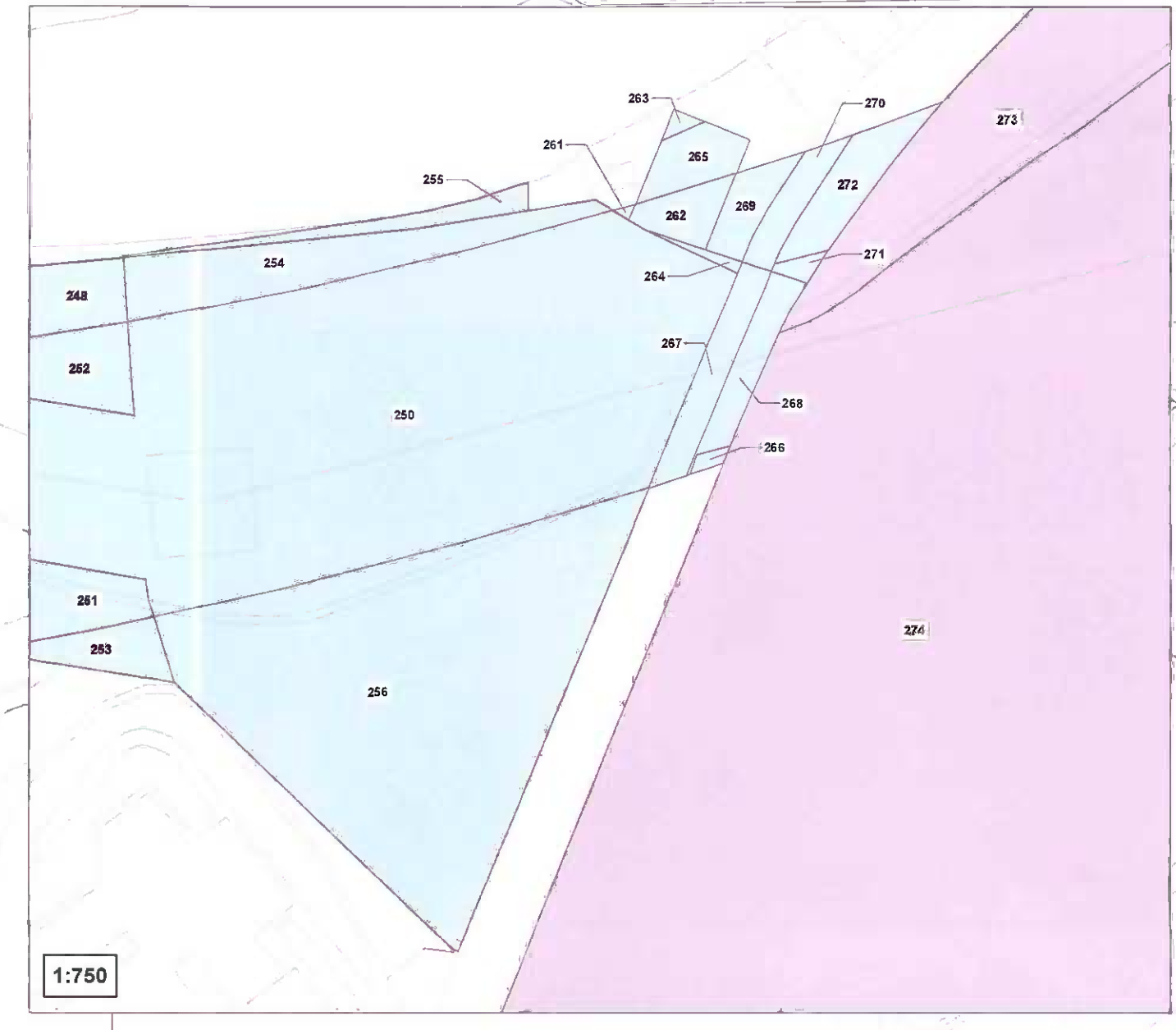
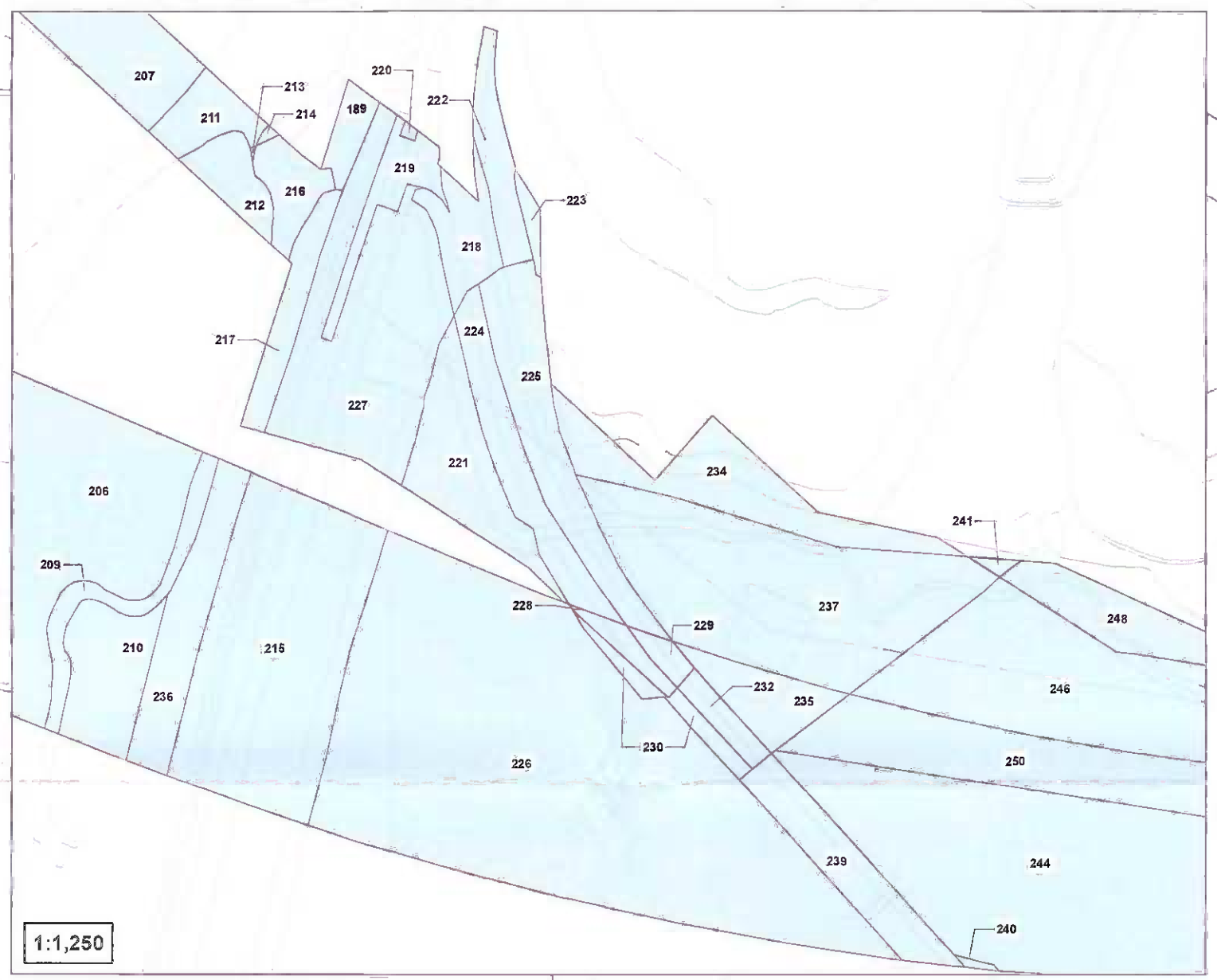
Scale: 1:2,500 Paper Size: A1

Notes  
This drawing is scaled at paper size A1, therefore  
any prints taken at different sizes will affect the  
accuracy of the measurement units and should not  
be scaled against.



Continues on Sheet 1

Continues on Sheet 3





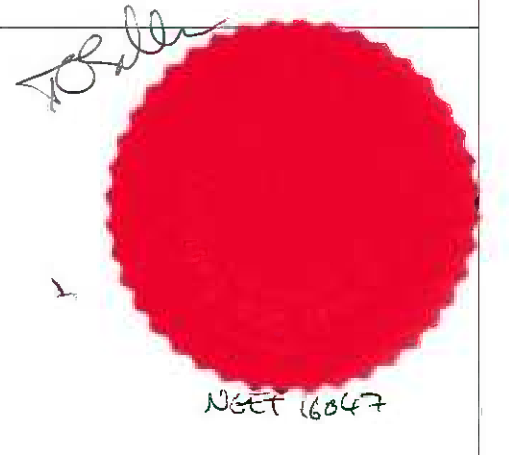


**LEGEND**

- Order Land Boundary
- New Rights to be Acquired
- Freehold Acquisition

Electricity Act 1989 and Acquisition of Land Act 1981  
Confirmed on behalf of the Secretary of State for Business,  
Energy and Industrial Strategy.

*P. R. McNamee 21/10/21*  
Gareth Leigh – Head of Energy Infrastructure Planning



**Department for  
Business, Energy  
& Industrial Strategy**

The common seal of National  
Grid Electricity Transmission plc  
was affixed on the 15 day  
of June 2020  
in the presence of  
*[Signature]*  
(Member of the Board Sealing  
Committee and Authorised  
Signatory)

Dated 15/06/20

BACKGROUND MAPPING INFORMATION HAS BEEN REPRODUCED  
FROM THE ORDNANCE SURVEY ON BEHALF OF THE CONTROLLER  
OF HER MAJESTY'S STATIONARY OFFICE.  
© CROWN COPYRIGHT ORDNANCE SURVEY NATIONAL GRID  
LICENSE NO. 100022488

Coordinate System: British National Grid  
Projection: Transverse Mercator  
Datum: OSGB 1936  
Units: Metre  
Plan Center  
Easting: 263,446  
Northing: 338,362

Plan 3 of 3

Version	Date	Published	SB	JP
2.0	10/06/2020			

Scale: 1:2,500 Paper Size: A1

**Notes**  
This drawing is scaled at paper size A1, therefore  
any prints taken at different sizes will affect the  
accuracy of the measurement units and should not  
be scaled against.

